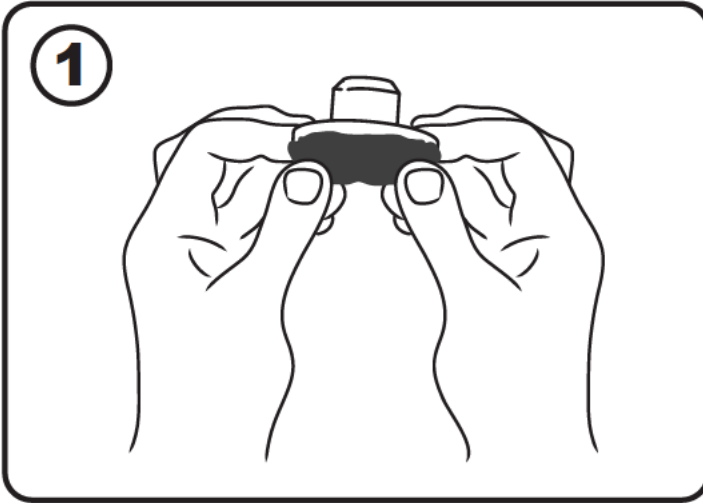


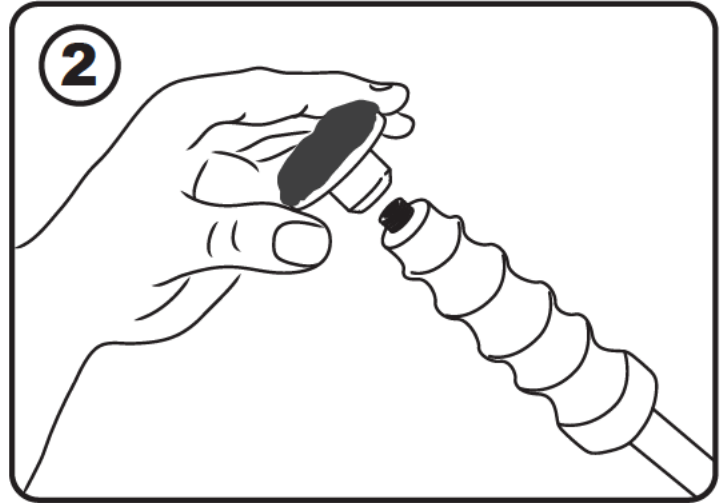
## Gold Glue Dent Removeal Kit

---

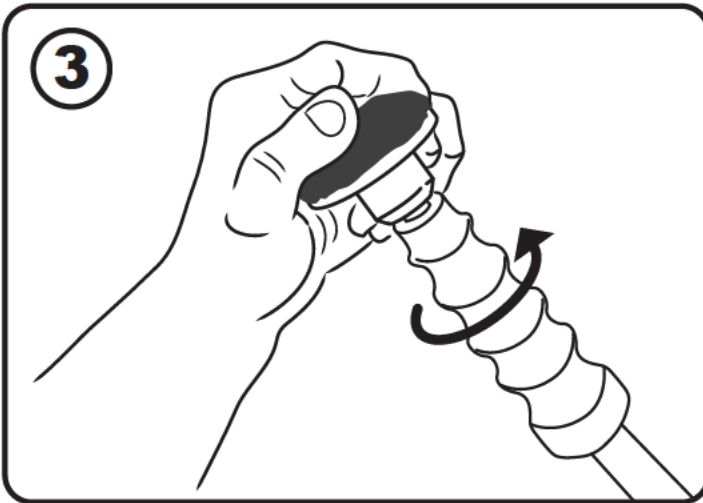
17600



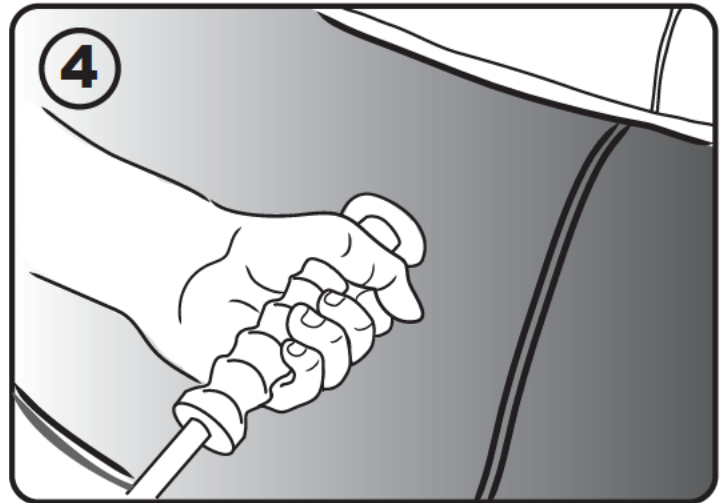
Take the suitable aluminum adaptor out of the box, identify the dent area also clean up the work surface. (4 sizes of aluminum adaptor available for selection)



Open the plastic box with black cold glue, separate the proper amount apply it evenly on the aluminum adaptor. Suggest to winding the glue on its end in order not to damage the car body.



After the glue fixed on the adaptor, screw the aluminum adaptor on the sliding hammer.



Apply the sliding hammer with an adaptor on the repair spot, gently make an effort to stick to the spot. Use the hammer axis as a lever to pull out the dent. You may apply several times to get the best result.

---